

Fitzhugh Auditorium AV Guide – Basic Setup

1. Connect the laptop to the lectern HDMI input using the provided cable:



2. Tap the lectern touch screen to turn on the projector and raise the screen:



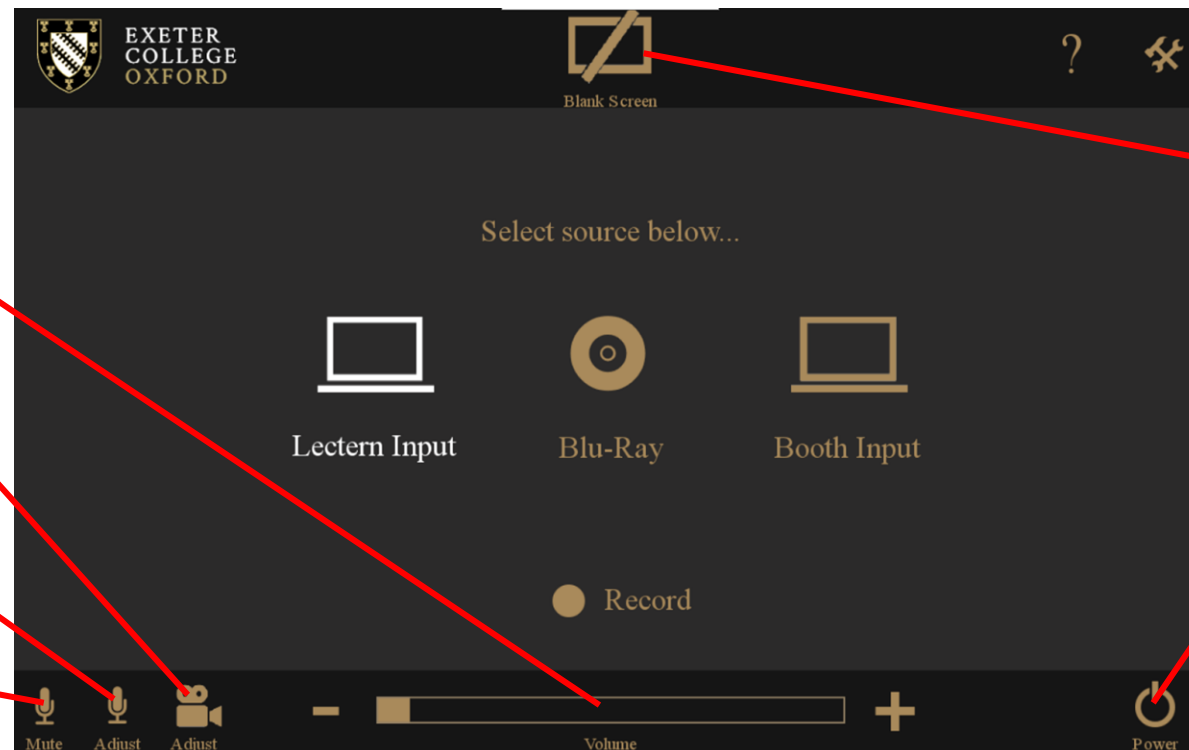
Touchscreen Controls

Press + or – to change the volume

Press to adjust the camera at the rear of the auditorium

Press to adjust individual microphones

Press to mute all microphones



Press 'Blank Screen' to blank the screen. Press again to restore the projection

Press the Power button to turn off the projector and lower the screen